

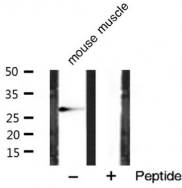
## Phospho-BCL-2 (Thr69) Ab

Cat.#: AF3139  
Size: 100ul,200ul

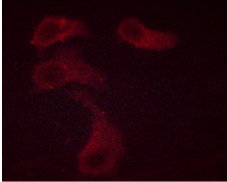
Concn.: 1mg/ml  
Source: Rabbit

Mol.Wt.: 28 kDa  
Clonality: Polyclonal

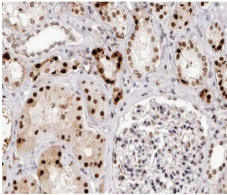
Application:	WB 1:500 IHC 1:50-1:200 IF/ICC 1:100-1:500
Reactivity:	Human,Mouse,Rat
Purification:	The Ab is from purified rabbit serum by affinity purification via sequential chromatography on phospho- and non-phospho-peptide affinity columns.
Specificity:	Phospho-BCL-2 (Thr69) Ab detects endogenous levels of BCL-2 only when phosphorylated at Threonine 69
Immunogen:	A synthesized peptide derived from human BCL-2 around the phosphorylation site of Threonine 69
Uniprot:	P10415
Description:	This gene encodes an integral outer mitochondrial membrane protein that blocks the apoptotic death of some cells such as lymphocytes. Constitutive expression of BCL2, such as in the case of translocation of BCL2 to Ig heavy chain locus, is thought to be the cause of follicular lymphoma. Two transcript variants, produced by alternate splicing, differ in their C-terminal ends.
Subcellular Location:	Mitochondrion outer membrane. Nucleus membrane. Endoplasmic reticulum membrane.
Tissue Specificity:	Expressed in a variety of tissues.
Similarity:	BH1 and BH2 domains are required for the interaction with BAX and for anti-apoptotic activity.The BH4 motif is required for anti-apoptotic activity and for interaction with RAF1 and EGLN3.The loop between motifs BH4 and BH3 is required for the interaction with NLRP1.Belongs to the Bcl-2 family.
Storage Condition and Buffer:	Rabbit IgG in phosphate buffered saline , pH 7.4, 150mM NaCl, 0.02% sodium azide and 50% glycerol.Store at -20 °C.Stable for 12 months from date of receipt



Western blot analysis of BCL-2 phosphorylation expression in mouse muscle whole tissue lysates, The lane on the right is treated with the antigen-specific peptide.



AF3139 staining Jurkat cells by ICC/IF. Cells were fixed with PFA and permeabilized in 0.1% saponin prior to blocking in 10% serum for 45 minutes at 37°C. The primary Ab was diluted 1/400 and incubated with the sample for 1 hour at 37°C. A Alexa Fluor® 594 conjugated goat polyclonal to rabbit IgG (H+L), diluted 1/600 was used as secondary Ab.



AF3139 at 1/200 staining human kidney tissue sections by IHC-P. The tissue was formaldehyde fixed and a heat mediated antigen retrieval step in citrate buffer was performed. The tissue was then blocked and incubated with the Ab for 1.5 hours at 22°C. An HRP conjugated goat anti-rabbit Ab was used as the secondary.



AF3139 staining MCF7 by IF/ICC. The sample were fixed with PFA and permeabilized in 0.1% Triton X-100, then blocked in 10% serum for 45 minutes at 25°C. The primary Ab was diluted at 1/200 and incubated with the sample for 1 hour at 37°C. An Alexa Fluor 594 conjugated goat anti-rabbit IgG (H+L) Ab, diluted at 1/600, was used as the secondary Ab.

**IMPORTANT:** For western blot, incubate membrane with diluted Ab in 5% w/v milk, 1X TBS, 0.1% Tween@20 at 4°C with gentle shaking, overnight.

For Research Use Only. Not for use in diagnostic and therapeutic procedures. Not for resale without express authorization.